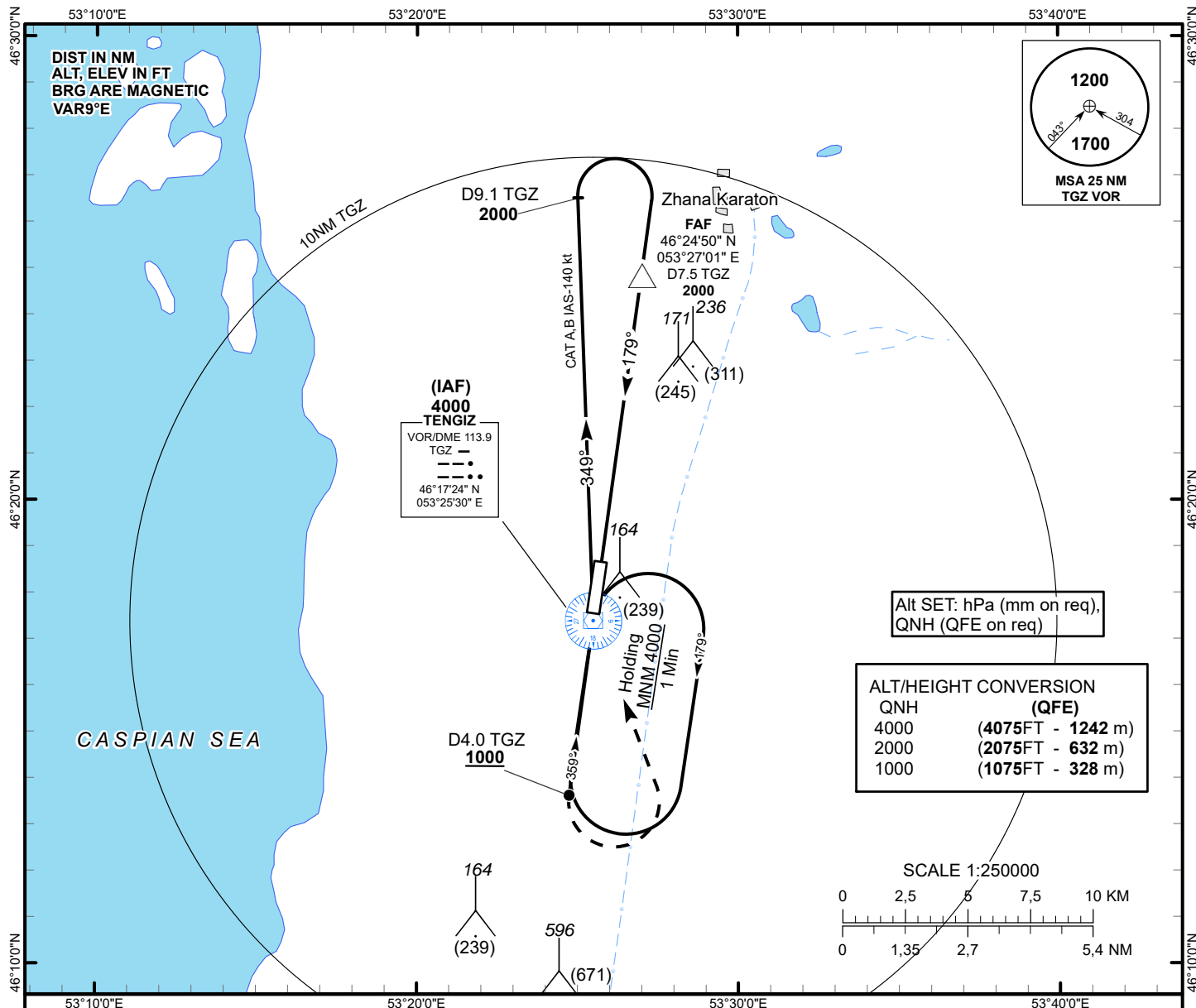


INSTRUMENT
APPROACH
CHART - ICAO

AERODROME ELEV -75FT
HEIGHTS RELATED TO
AD ELEV

TENGIZ TOWER 119.2

TENGIZ
VOR/DME
RWY 18



IAF 4000

TRANSITION ALT
10000

VOR/DME
TGA

MAPt
D1.6 TGA

PDG 5.2% (3.0°)

179°

FAF
D7.5 TGA
2000

2000

ELEV -77
THR RWY 18

MISSED APPROACH

Climb on track 179° to 1000 or above,
outbound not further than D4.0NM from TGA,
turn LEFT to TGA.

Climb initially to 2000, then as directed by ATC.

RADIO FAILURE:

in case of RCF climb to 4000 to TGA and join
to holding pattern. Missed approach turn speed
limited to 150 Kt IAS maximum

CHANGE: Direction; Revised.

Aircraft Category		A	B	C	D	DIST to THR	NM	6.4	5	4	3	2	1	
Straight-in Approach OCA/H						DME TGZ	NM	7.5	6.1	5.1	4.1	3.1	2.1	
	VOR/DME	320(400)	320(400)			ALTITUDE	FT	2000	1563	1245	926	608	290	
						HEIGHT	FT	(2077)	(1640)	(1322)	(1003)	(685)	(367)	
Aerodrome Operating Minima MDH ft x RVR(CMV)	VOR/DME													
						GS	kt	70	80	90	100	110	120	130
						FAF-MAPt (5.9 NM)	min:sec	5:03	4:26	3:56	3:32	3:13	2:57	2:43
						Desc.Rate(5.2%)	ft/min	370	420	480	530	580	640	690

TENGIZ (UATZ)
VOR/DME RWY18

AERONAUTICAL DATA TABULATION

VOR approach to RWY18 from TGZ VOR/DME	
Fix/point	Coordinates
TGZ VOR/DME (IAF)	46° 17' 23.9"N 053° 25' 29.9"E
D7.5 TGZ (FAF)	46° 24' 50.3"N 053° 27' 00.6"E
THR RWY18	46° 18' 29.01"N 053° 25' 43.11"E
Final approach descent angle is 3.0°	